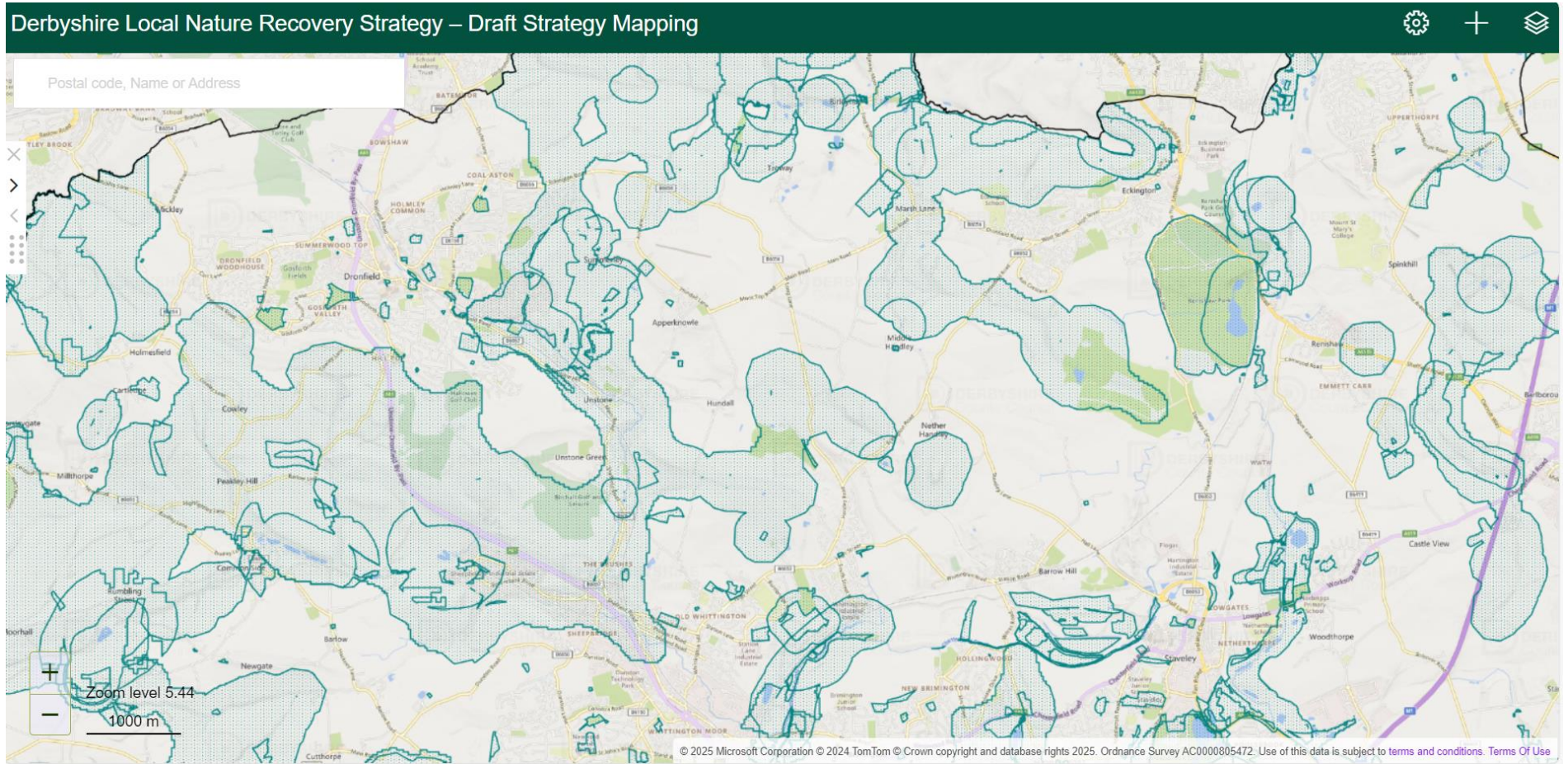
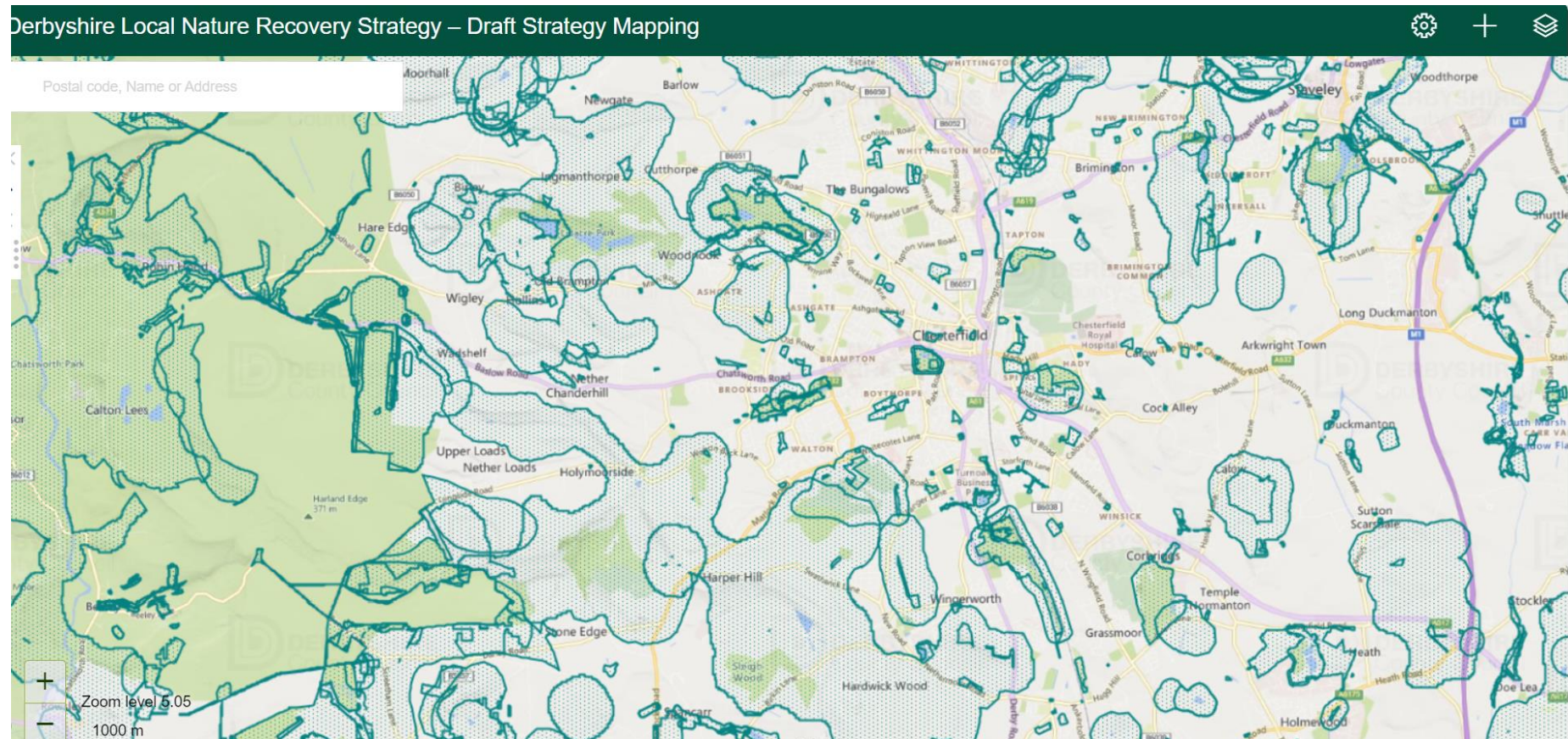


Mapping for north of the District (areas outlined and dotted in green being general priority areas for enhancement).



Mapping for central part of the District (areas outlined and dotted in green being general priority areas for enhancement).



Mapping for southern part of the District (areas outlined and dotted in green being general priority areas for enhancement).

### Derbyshire Local Nature Recovery Strategy – Draft Strategy Mapping

